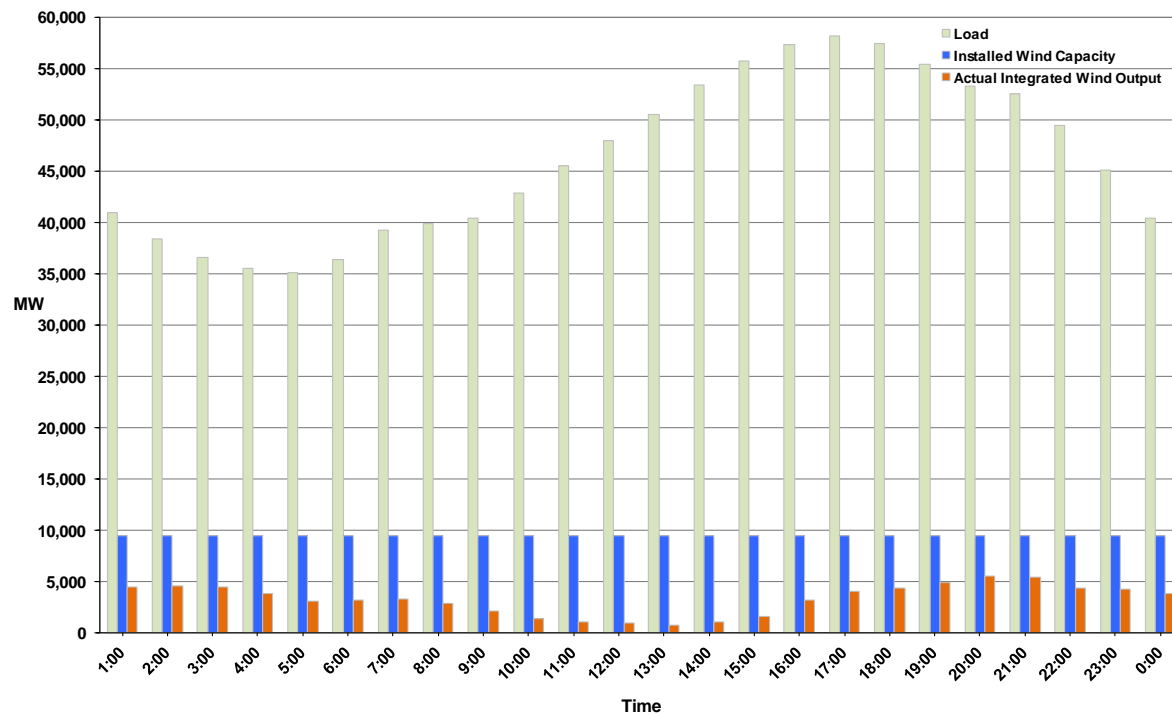




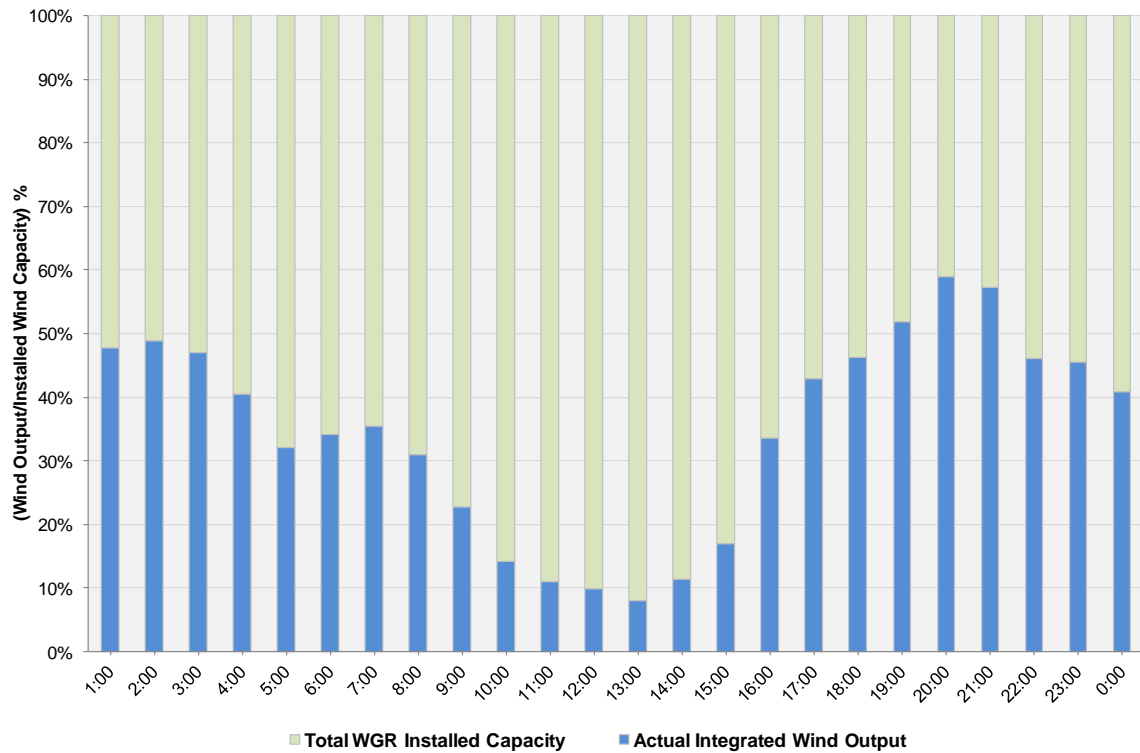
## ERCOT Grid Operations Wind Integration Report: 09/14/11

Peak Load	<b>58,192 MW</b>
Load Peak Hour	<b>17</b>
Wind over Peak	<b>4,046 MW</b>
Wind Record 06/19/11	<b>7,355 MW</b>
Max Wind Value	<b>5,672 MW</b>
Wind Peak Time	<b>19:34:32</b>
Wind Integration %	<b>10.68%</b>

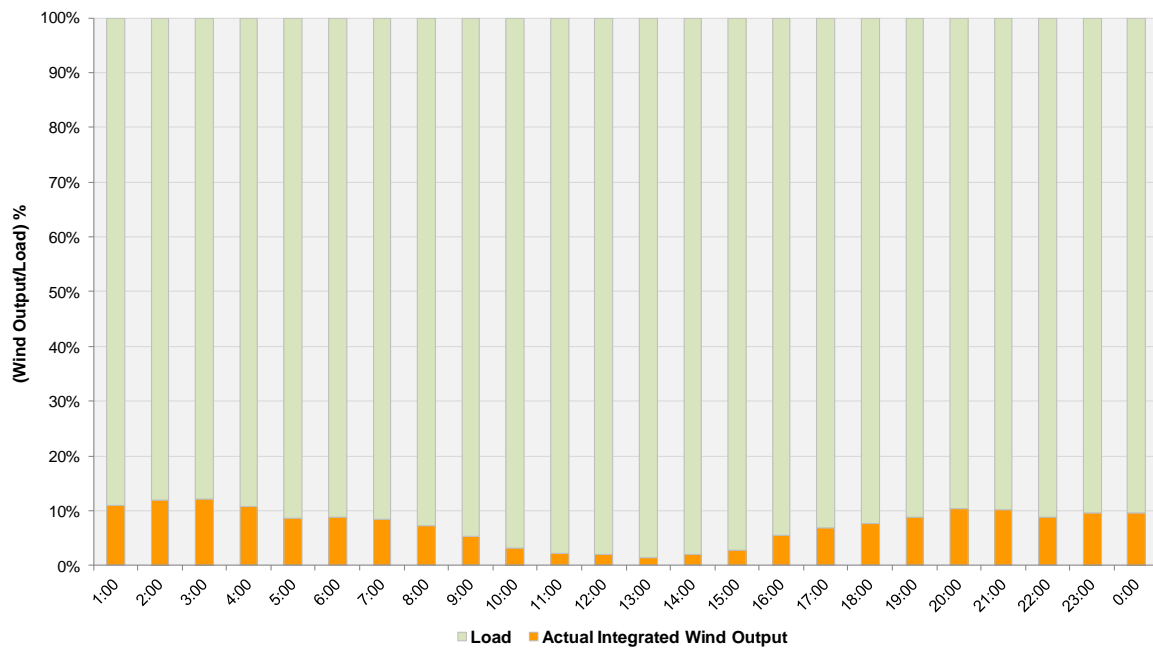
**Hourly Average Actual Load vs. Actual Wind Output  
09-14-2011**



**Actual Wind Output as a Percentage of the Total Installed Wind Capacity**  
**09-14-2011**



**Actual Wind Output as a Percentage of the ERCOT Load**  
**09-14-2011**



ERCOT Load vs. Actual Wind Output 9/7/2011 - 9/14/2011

